

Feed additives, circularity enablers

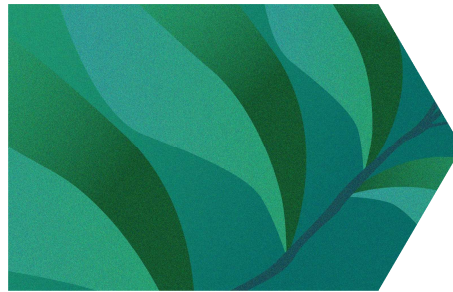
FEFAC workshop on
advanced feeding strategies for enhanced and circular
sustainable livestock and aquaculture production
June 14, 2023

Sabine Van Cauwenberghe

A systemic approach is required to ensure animal protein production becomes more sustainable and more profitable

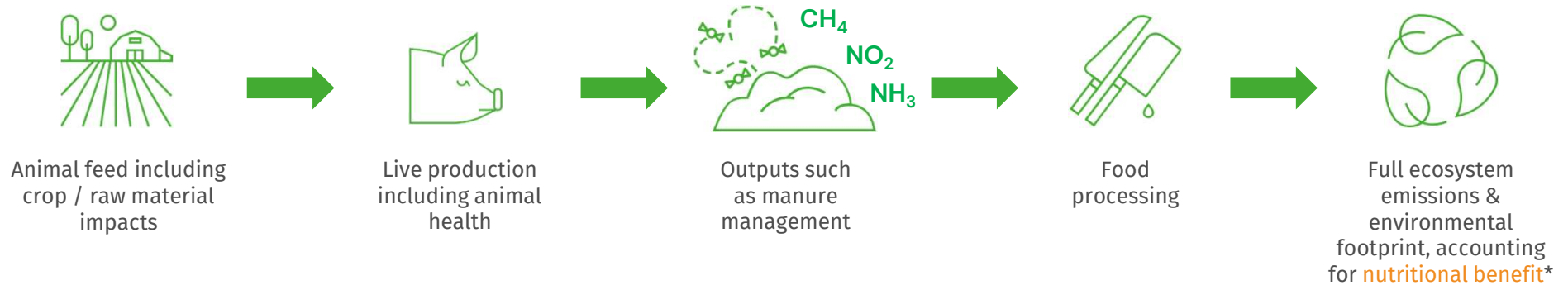
From a siloed industry approach

There are many **product-driven approaches** that are focused purely on single steps of the **ecosystem** looking at it from a **supplier perspective**



To a food-system approach

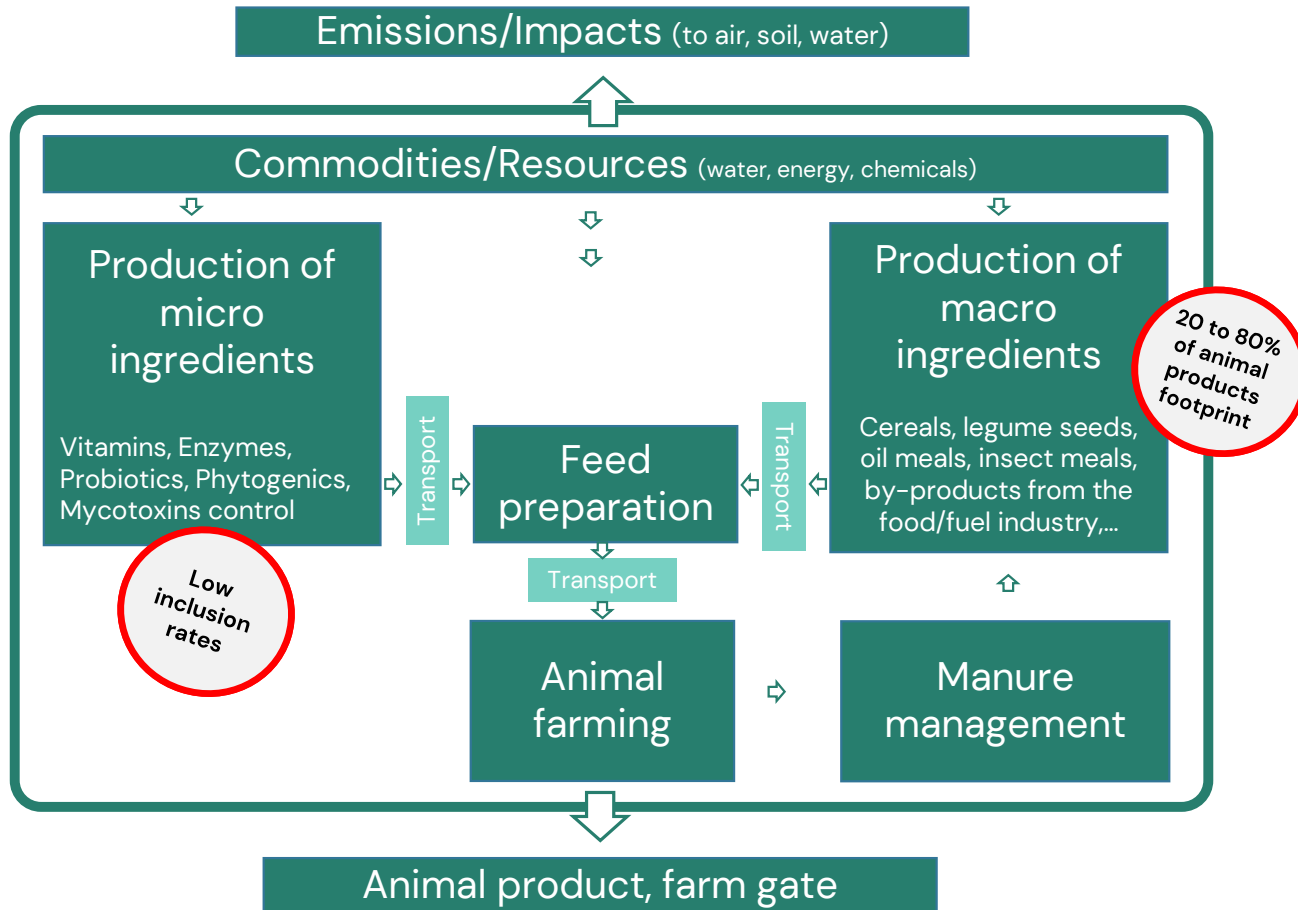
Only a full system approach allows **measuring the integrated environmental footprint** of animal protein, and improve it thereof



* See FAO. 2023. Contribution of terrestrial animal source food to healthy diets for improved nutrition and health outcomes – An evidence and policy overview on the state of knowledge and gaps. Rome, FAO. <https://doi.org/10.4060/cc3912en>

Feed additives are circularity enablers

Life cycle assessment to measure how much resources are used until the farm gate



PEF (Product Env. Footprint) initiatives are part of the Green Deal Circularity Action Plan.

Optimized animal footprint at the farm gate means an optimal use of resources. The higher the circularity profile, the lower the footprint.

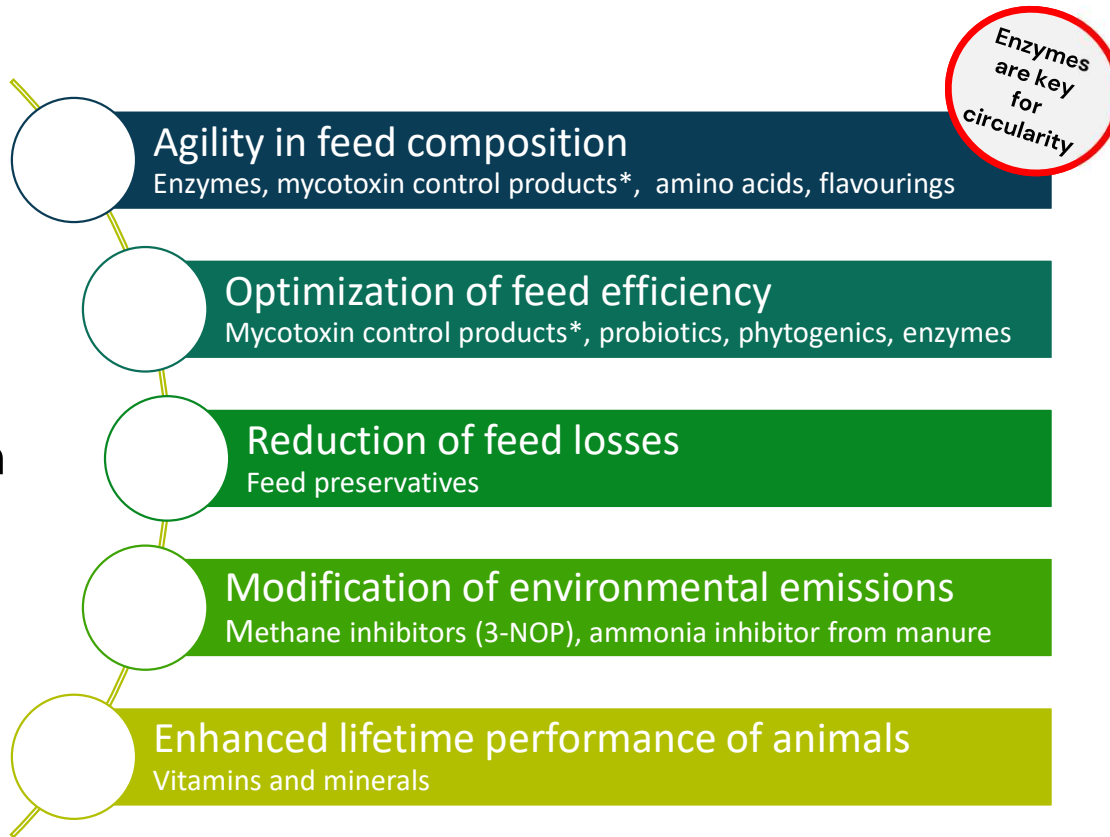
Farm gate footprint calculation is key to steer and quantify circularity levels.



Feed additives are circularity enablers

They allow reducing the footprint of animal products

Micro
nutrition
toolbox



By-products can contain high level of mycotoxins*

Feed additives facilitates the ability of animals to convert feed into nutritious products, supporting

- circularity
- emissions reduction
- adaptability/resilience

* See [dsm-firmenich \(2023\) Mycotoxin survey on by-products and alternative feed components](#)

Drivers for implementation of sustainable feeding techniques

Some elements

Systematize farm footprinting...

From standardized feed footprint till food labeling

LCA as a scalable metric, capturing feed value and optimization efforts

... for steering purpose

- To dashboard farm/products environmental performance, user-friendly, farm specific ([Sustell](#))
- To diagnose hot-spots and improve business performance

... for communication purpose

- To trigger targeted incentivization measures
- To meet value chain demands and unlock value for farmers
- To lever the power of the consumers to reward best in class producers, in a farm-specific manner
- To join the digitalization of our society

“You do not improve what you do not measure”



We bring progress to life™